

# 600i DUETTO BOOKLET SYSTEM

DUAL-INLINE SYSTEM FOR BOTH OFFSET AND DIGITAL PRINT

**PC Controlled, fully automated bookletmaking system**  
**Unparalleled versatility**  
**Up-to 5200 booklets per hour**  
**Digital and offset printed A4 Landscape format**

*Financial and Investment Reports, Personalised University Prospectuses, Corporate Reports, Menus, Catalogues,  
Brochures, Coupon Booklets, Yearbooks, Picture Books, Magazines, Newsletters, Course Work, CD Booklets*



The 600i Duetto Booklet System is the ideal solution for the printer with both offset and digital printing presses. The system is equipped with intelligent feeding and provides complete integrity and security for the bookletmaking process.



### Superior Feeding

Duplo's superior feeding technology, and A.M.S.+ (Air Management System Plus) come as standard. Controlled from the PC Controller and the towers, this unique feeding system incorporates its own individual high power fans which provide variable amounts of air/vacuum to each bin independently and can be adjusted to feed differing stock weights and sizes. The vacuum feed belt system ensures that each sheet is accurately and consistently delivered.



### IMBF System

The DSC-10/60i includes I.M.B.F. (Intelligent Multi Bin Feeding) which allows the operator to select each bin individually, as a block, as a tower or link multiple independent bins together to best suit each application. Each tower of 10 bins is completely independent and can be optimised to feed single or multiple sheets from each bin.



### Integrity and Security

Optical Mark Recognition detects the end of a document, even when a set has different number of sheets. The optional Barcode Kit which reads 1D or 2D barcodes, helps control production, merge and check every single sheet, which in turn guarantees full set integrity.



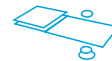
### Automated Precision

The entire system is managed from a single user friendly PC controller which automatically sets up the system and any changes between jobs within seconds, all without the use of any tools. The operator can create and save an unlimited number of jobs with ease for future instant recall.



### Productivity

The 600i Duetto Booklet System can finish up to 5,200 books per hour without operator intervention. With the optional DKT-200 it can finish up to 9,000 books per hour.

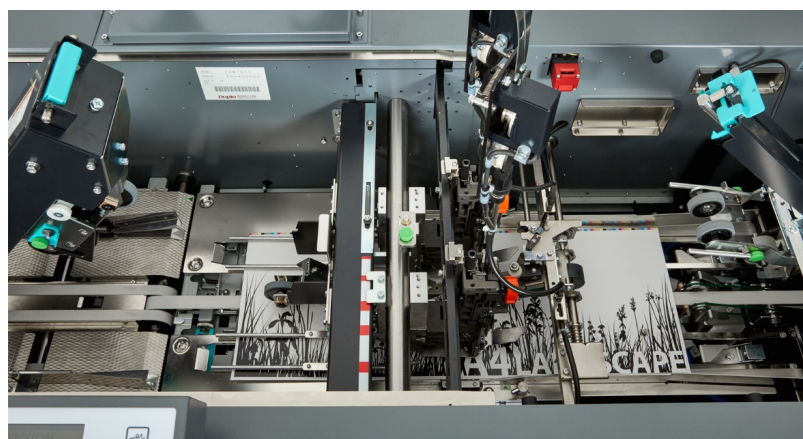


### Ultrasonic Sensor Technology

Like the DSF-2200 which has Ultrasonic Technology as standard, each bin on the DSC-10/60i has the option of being equipped with ultrasonic sensors which detect if a double feed occurs. Regardless of ink colour, paper colour and paper density, it enables the operator trouble free feeding of different paper weights in the same job, this is ideal for handling variable sheets.



Optional DKT-200 head/foot trimmer with Gutter cut & Hole punch unit



Flat paper path, open architecture and easy access



### A4 Landscape Format

The 600i Duetto Booklet System offers high speed professional finishing for a wide variety of formats and sizes. It can accommodate sheets up to 610mm long, and produce the popular A4 landscape format as well as a 300x300mm finished photo album. Even when the smallest formats are required there is no need for special parts to be added or removed, the machine will adjust itself automatically. To accommodate an even wider range of finished applications, up to 4 heavy duty Hohner heads or loop stitching heads can be installed.



### Modularity

The 600i Duetto Booklet System is a very modular system and can be customised according to the end users need, allowing them to configure and expand as their needs and demands change.



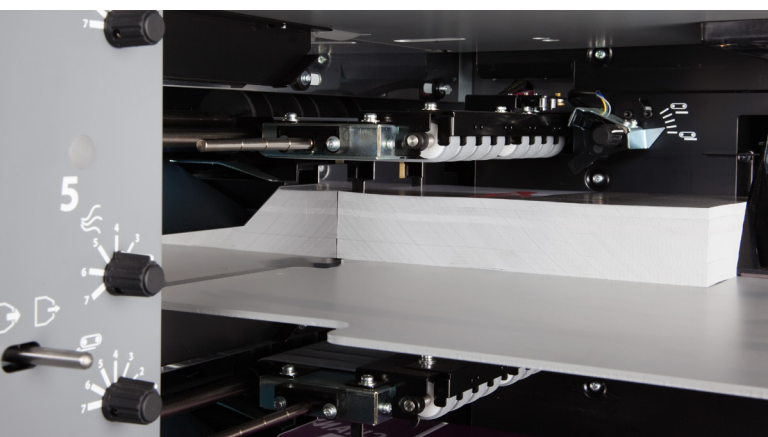
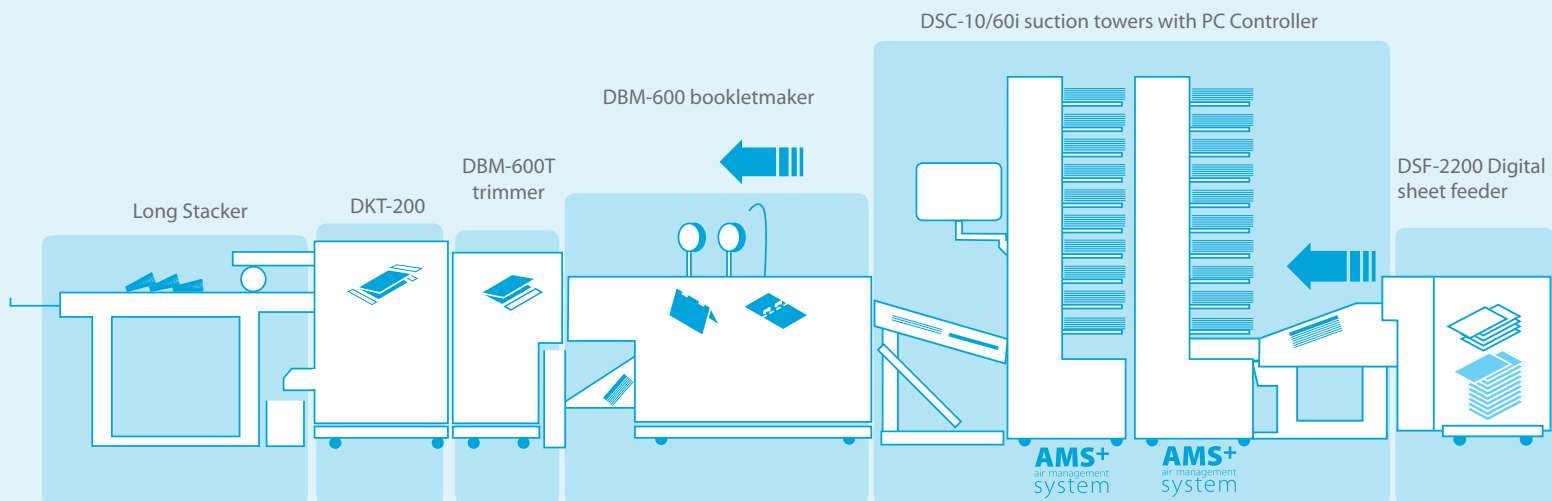
### Options:

#### DKT-200

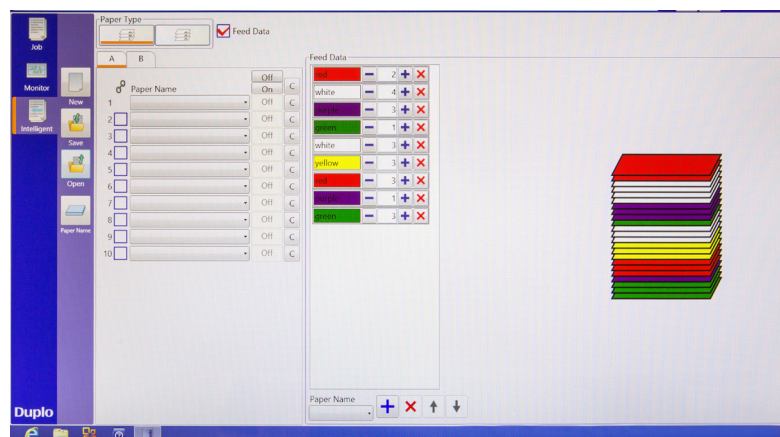
optional DKT-200 trimmer can be connected which provides a completely automatic 3 knife trimming operation. This allows the user to take the printed SRA3 or B3 sheet directly from the press and finish the book in one operation, providing huge savings on guillotining and labour costs. The optional gutter knife enables the printer to finish a 2-up printed page, greatly increasing the overall production to 9,000 books.



## 600i Duetto Booklet System - Process workflow



Accurate and reliable A.M.S.+ suction feed system



Intelligent Collation on the PC Controller

# Technical Specifications

## DBM-600 Bookletmaker, DBM-600T Trimmer

<b>Max Booklet 1-up Production Speed</b>	4,600 A5-booklets up to 10 sheets 5,200 105x200mm-booklets up to 5 sheets
<b>Max Booklet 2-up Production Speed</b>	Up to 9,000 booklets/hr 2-up booklets (when connected with DKT-200 Trimmer)
<b>Max Booklet Thickness</b>	6 mm (30 sheets of 80 gsm, 120 pages book)
<b>Flat Sheet Size</b> Max Flat Sheet Size over 500 mm in Length	Max 350 mm (W) x 508 mm (L) Max 230 mm (W) x 610 mm (L) Min 120 mm (W) x 170 mm (L) Min 105 mm (W) x 297 mm (L)
<b>Finished Untrimmed Booklet size 1-up Production</b>	Max 350 mm (W) x 254 mm (L) Min 120 mm (W) x 85 mm (L) Min 105 mm (W) x 148,5 mm (L)
<b>Finished Booklet Size 1-up Production</b>	Max 350 mm (W) x 254 mm (L) Min 120 mm (W) x 75 mm (L) Min 105 mm (W) x 75 mm (L) Max 210 mm (W) x 297 mm (L)
Max Finished Booklet Size over 500 mm in Length	
<b>Finished Booklet Size 2-up production</b> 2 stitches in each booklet (centered) 2 stitches in each booklet (non-centered) 1 stitch in each booklet	Max 171 mm (W) x 254 mm (L) Min 114 mm (W) x 75 mm (L) Min 105 mm (W) x 75 mm (L) (12 pages max) Min 90 mm (W) x 75 mm (L) (12 pages max)
<b>DBM-600T Trimmer Front Knives</b>	1 to 25 mm Up to 75 mm with 12 pages or less within 6 mm
Max Trimming Thickness	
<b>Folding Capacity</b>	2-30 Sheets
<b>Fine Adjustment</b>	From 0.1 mm
<b>Max Stitching Capacity</b>	3 mm (30 Sheets of 80 gsm)
<b>Min/Max Stitching Head Distance (1-up)</b>	60 - 320 mm
<b>Stitching Head Distance (2-up)</b>	58.5 mm (55 mm in fine adjustment mode)
<b>Stitching Heads</b>	Standard Fitting: 2x Hohner 43/65 Optional 4 Hohner Flat/loop heads
<b>Controls (DBM-600/600T, DKT200, DSC10/60i, DSF2200)</b>	PC Controlled Job Programming, save and recall Fully automated set-up Microsoft Windows-base GUI (Graphical User Interface) Individual control panel for fine adjustment Infinite from PC Controller
<b>Job Memories</b>	
<b>Folding Rollers</b>	Automatic Mechanism
<b>Error Detect Sensors</b>	Stitching Wire; Paper Feed; Paper Jam, Safety Guards
<b>Features</b>	Quick and automatic job changeover Straight paper path with LED lighting Centre registered system Clear visibility, wide and easy access within each modules
<b>Options</b>	4 Hohner flat/loop heads DBM-600 Sheet by sheet air kit (multiple sheet feeding) DBM-600 Offset Trim with manual control (from A to 21mm) Hand feed Kit (DBM-600 manual feeding)
<b>DKT-200</b>	Min/Max trim 2-60 mm 30 mm Max trim for each knife
Max Trimming Thickness	1-up: 6mm 2-up with Gutter knife: 2.4mm Hole Punch unit: 3mm 6 mm Gutter Cut knives DKT-200 Offset Trim kit with manual control (from 1 to 21 mm) 6.4 mm Diameter 2 Hole Punch Kicker/Batching Unit
DKT-200 Options	
Hole Punch Gutter Knife	
<b>Connecting Devices</b>	DKT-200 Head and Foot Trimmer ASM-600 Square spine for perfect bound effect DCR-ST Stacker (criss cross) DBM-600T/DKT-200 Long Delivery Conveyor (DBM-LSW) Paper extractor device
<b>Power Supply</b>	220 - 240V 50/60Hz (DBM-600: 2.5A/DBM-600: 3.4A)
<b>Power Consumption</b>	DBM-600: 465 W - DBM-600T: 645 W
<b>Dimensions - Net Weights</b>	DBM-600 1848 mm (W) x 929 mm (D) x 1227 mm (H) - 377 kg DBM-600 Trimmer 716 mm (W) x 717 mm (D) x 1124 mm (H) - 233 kg DKT-200 & LSW 2302 mm (W) x 700 mm (D) x 1169 mm (H) - 472 kg

## DSC-10/60i Suction Tower Collator

<b>Bin Capacity</b>	65 mm
<b>Paper Size</b>	Max 350 mm (W) x 508 mm (L) Min 105 mm (W) x 297 mm (L) Max 230 mm (W) x 610 mm (L)
Max Flat Sheet Size over 500 mm in Length	
<b>Paper Weight</b>	50 - 300 gsm from each bin
<b>Max Booklet Processing Speed</b>	4,600 sets/hr A5 (SEF), 4,100 set/hr A4 (SEF), 3,600 sets/hr A4 (LEF) - 10 sheets
<b>Max No of Connectable Towers in Duetto Configuration Detection</b>	Up to 6 x DSC-10/60i Collating Towers
<b>Counters</b>	Miss, double, paper jam and empty bin sensors
<b>Features Intelligence</b>	Total, batch, set reject Block mode (1/2, 1/3, 1/4) Programmable intelligent multiple bin feeding Possibility to increase bin feeding capacity to 130mm, 195mm or more A4 landscape Hand marry mode Hand feeding mode
<b>AMS+ Feeding System</b> Unique Total Feed Control on Each Bin	Ability to increase the flow of air and vacuum on each bin Ability to adjust the feed timing Twin belt drive on conveyor Ability to adjust the sheet overlap Automatic ejection of faulty sets Stand-by or waiting mode
<b>Power Supply</b>	220 - 240V 50/60Hz 5.3A 980W
<b>Dimensions - Net Weights</b>	756 mm (D) x 830 mm (W) x 1972 mm (H) - 297kg
<b>Options</b>	Ultrasonic double sheet detection

## DSF-2200 Sheet Feeder

<b>Paper Capacity</b>	Main feed tray: 200 mm media stack height Auxiliary feed tray: 65 mm media stack height
<b>Paper Size</b> Max Flat Sheet Size over 500mm in Length	Max 356 mm (W) x 508 mm (L) Max 230 mm (W) x 610 mm (L) Min 105 mm (W) x 200 mm (L)
<b>Paper Weight</b>	From 60 to 300 gsm
<b>Features</b>	OMR (Optical Mark Reader) end-of-set mark reader Ultrasonic double sheet detection Hand feeding Active anti-static bar Trail edge air kit (Extra air for long sheet sizes up to 610 mm in Length)
<b>AMS+ Feeding System</b> Unique Total Feed Control on Each Bin	Ability to increase the flow of air and vacuum on each bin Ability to adjust the feed timing
<b>Optional Barcode Reader Kit</b>	Fits two trays 1D & 2D Barcode recognition Codes supported: Code 39, 93, 128, 2of5, Datamatrix
<b>Options</b>	Pre-loading tray kit (Pre-loading stack of sheets on trolley)
<b>Power Supply</b>	220 - 240V 50/60Hz 1.1 A 260W
<b>Dimensions - Net Weights</b>	750 mm (D) x 920 mm (W) x 843.5 mm (H) - 115 kg



### Duplo International Limited

Automated Precision House,  
Hamm Moor Lane,  
Addlestone,  
Surrey KT15 2SD

Tel +44(0) 1932-263-900 - Fax +44(0) 1932-263-901  
info@duplointernational.com - www.duplointernational.com

Production rates are based on optimal operating conditions and may vary depending upon stock and environmental conditions. As part of our continuous product improvement program, specifications are subject to change without notice.

Duplo is a trade mark of the Duplo Corporation.



Ref: 600DUETTO/10/15